



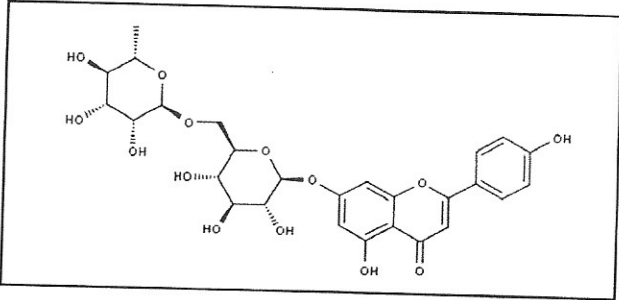
INDOFINE Chemical Company, Inc.

121 Stryker Lane, Bldg. 30
Hillsborough, NJ 08844 USA
Phone: (908) 359-6778; Fax: (908) 359-1179

Certificate Of Analysis

021121S **ISORHOIFOLIN** **Lot No.: 19042117**

CAS RN	552-57-8
MOL FORMULA	C ₂₇ H ₃₀ O ₁₄
MOL WEIGHT	578,53



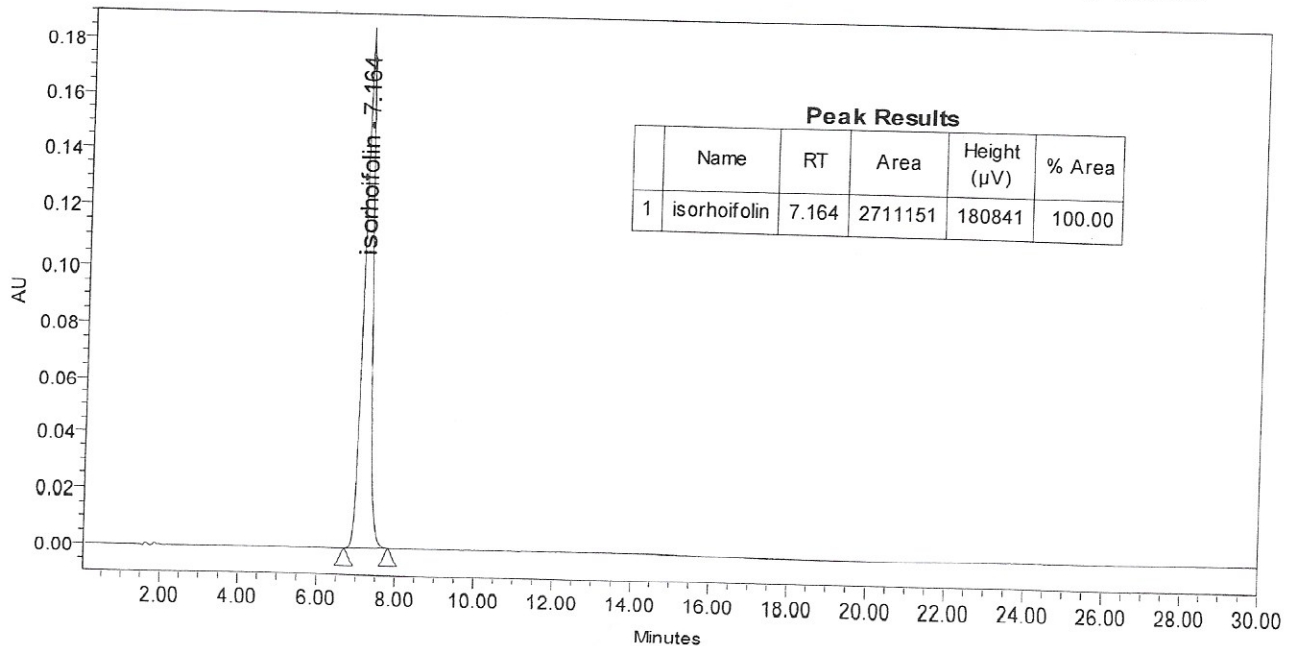
TEST	METHOD	UNIT	SPECIFICATION	RESULT
Appearance	Visual		Slightly yellow powder	Conform
Water content	KF	% w/w		0,2
Residual solvents	GC-HS	% w/w		0,9
Inorganics	ICP-MS	% w/w		< 0,1
Purity	HPLC	% area	≥ 98,5	100
Assay	Calculated (*)	% w/w		98,9

(*) Assay = Purity by HPLC x (100 - %water - %solvents - %inorganics)

CHROMATOGRAPHIC PURITY / HPLC

Column : Symmetry Shield RP18 - 4,6x150 mm - 3,5 μm
 Mobile phase : Water + 0,3% H₃PO₄ 65 / MeOH 25 / ACN 10 (v/v/v)
 Detection : UV 254 nm

Temperature : 30°C
 Flow rate : 1 ml/min
 Injection volume : 5 μl
 Injection solvent : EtOH + 10% DMSO



LONG TERM STORAGE : Below 8°C in a dry and dark place

TRANSPORT CONDITIONS : Ambient temperature